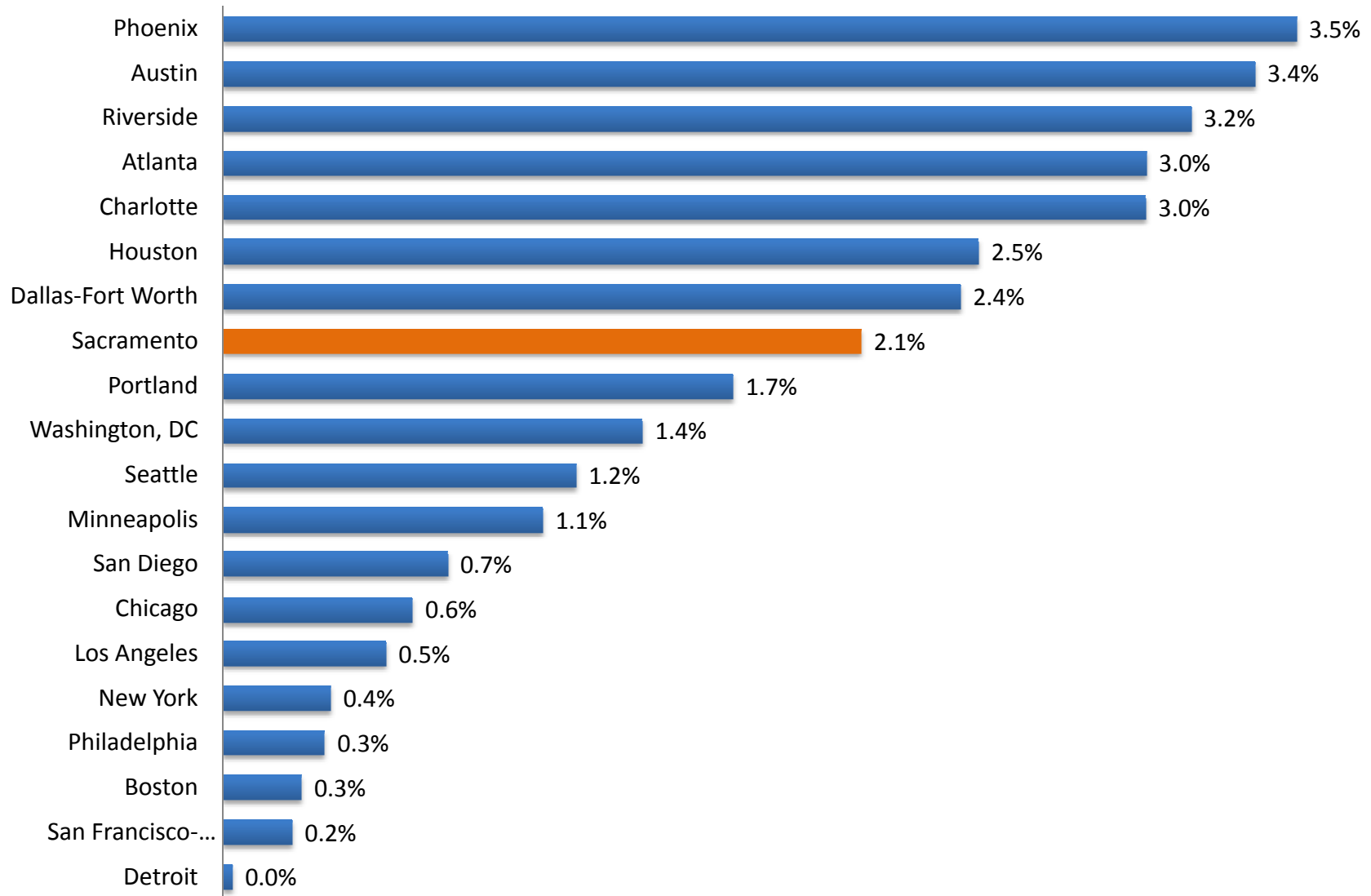


Sacramento Region Analysis

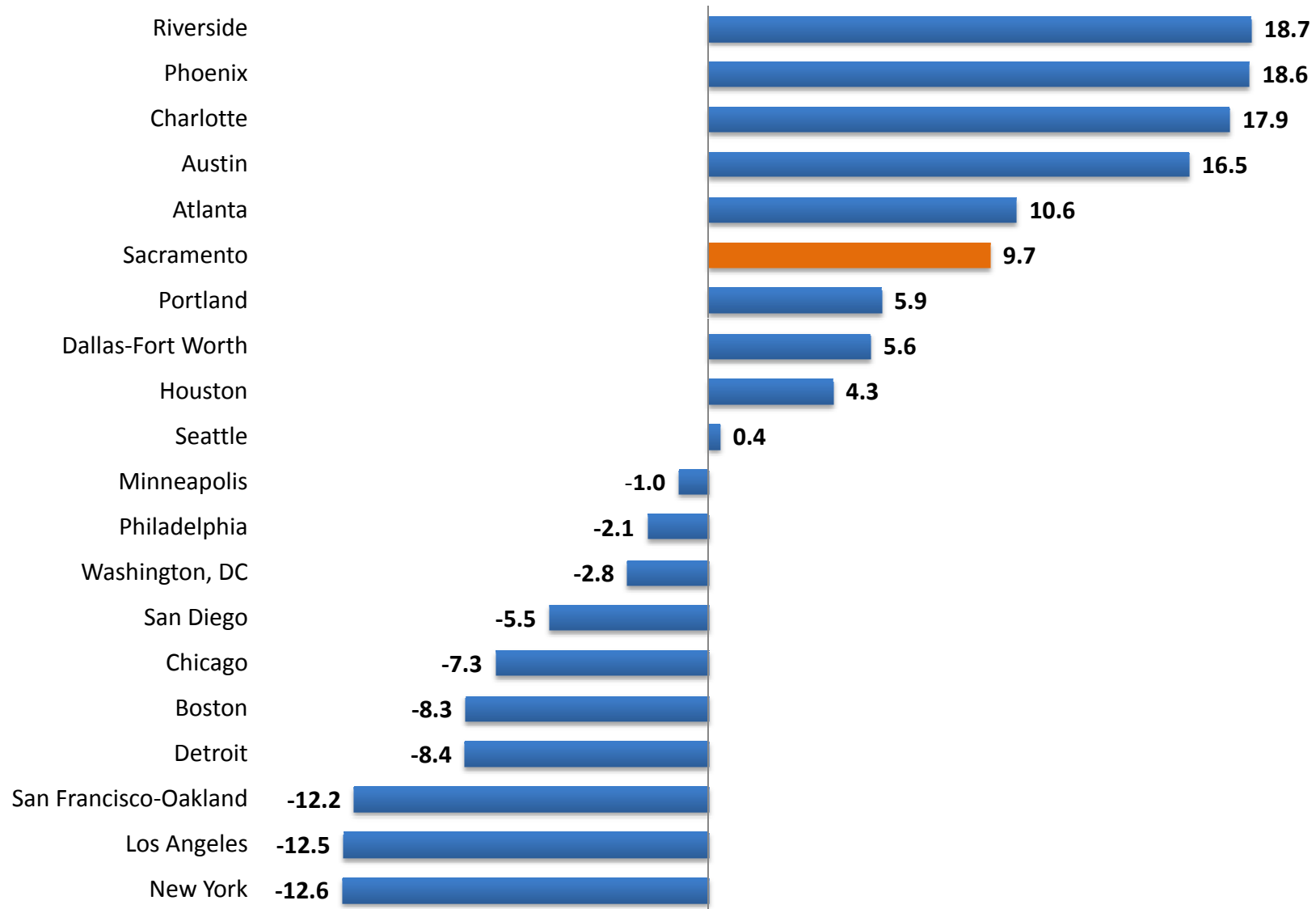
Analysis by
Mark Schill



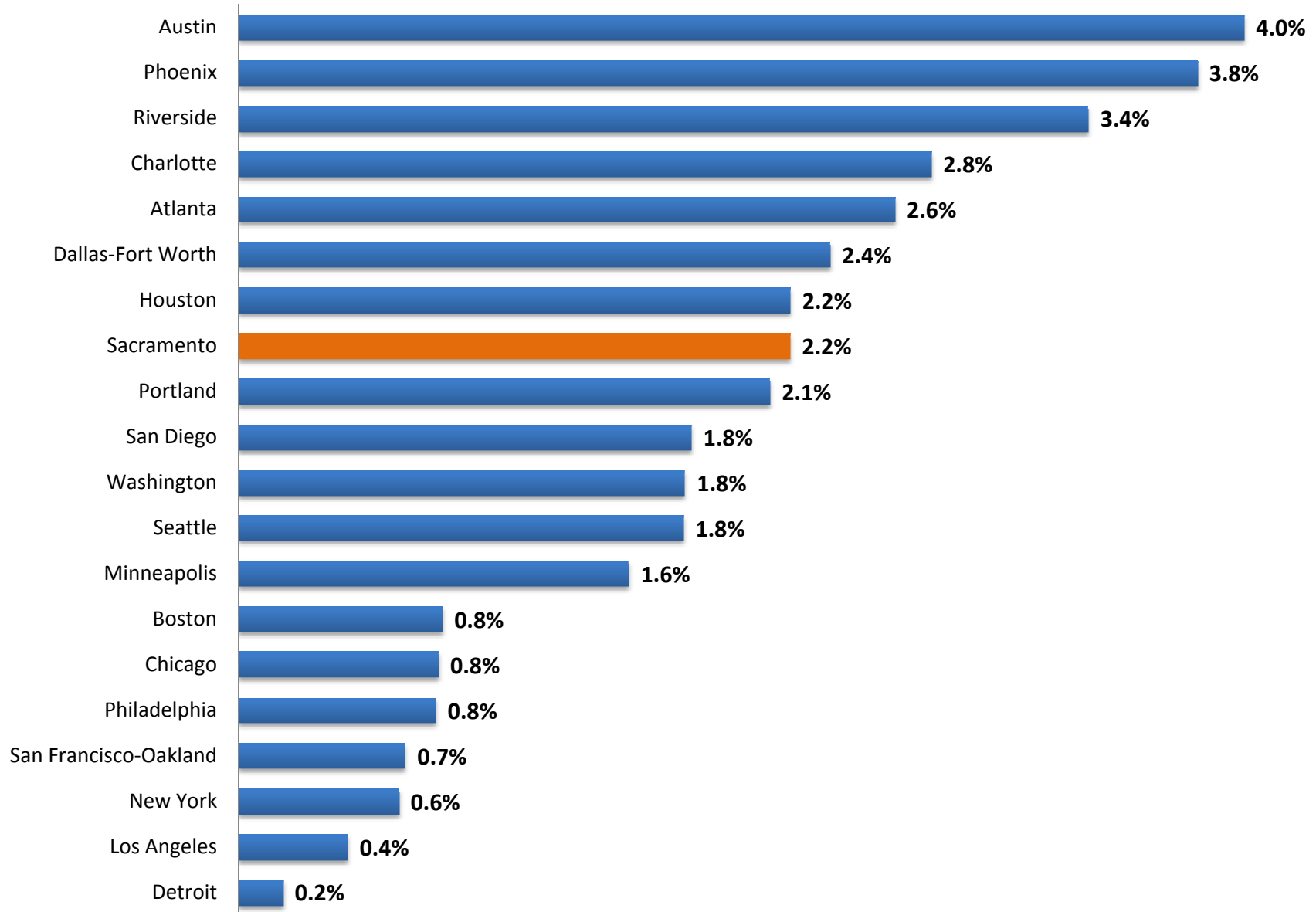
Metropolitan Population Growth, Annual Average, 2000 - 2007



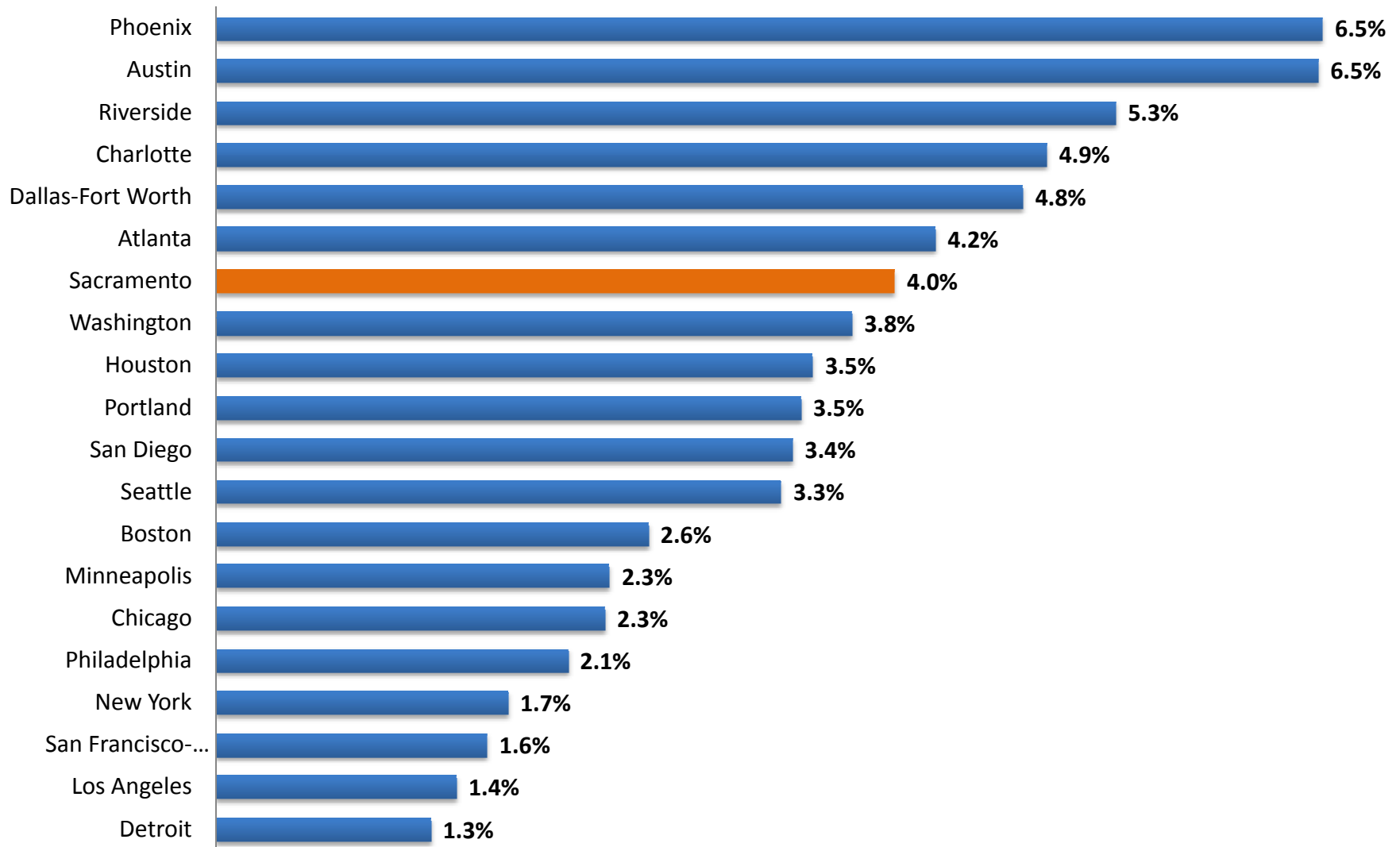
Metropolitan Net Domestic Migration, annual average rate per 1,000 population, 2000 - 2007



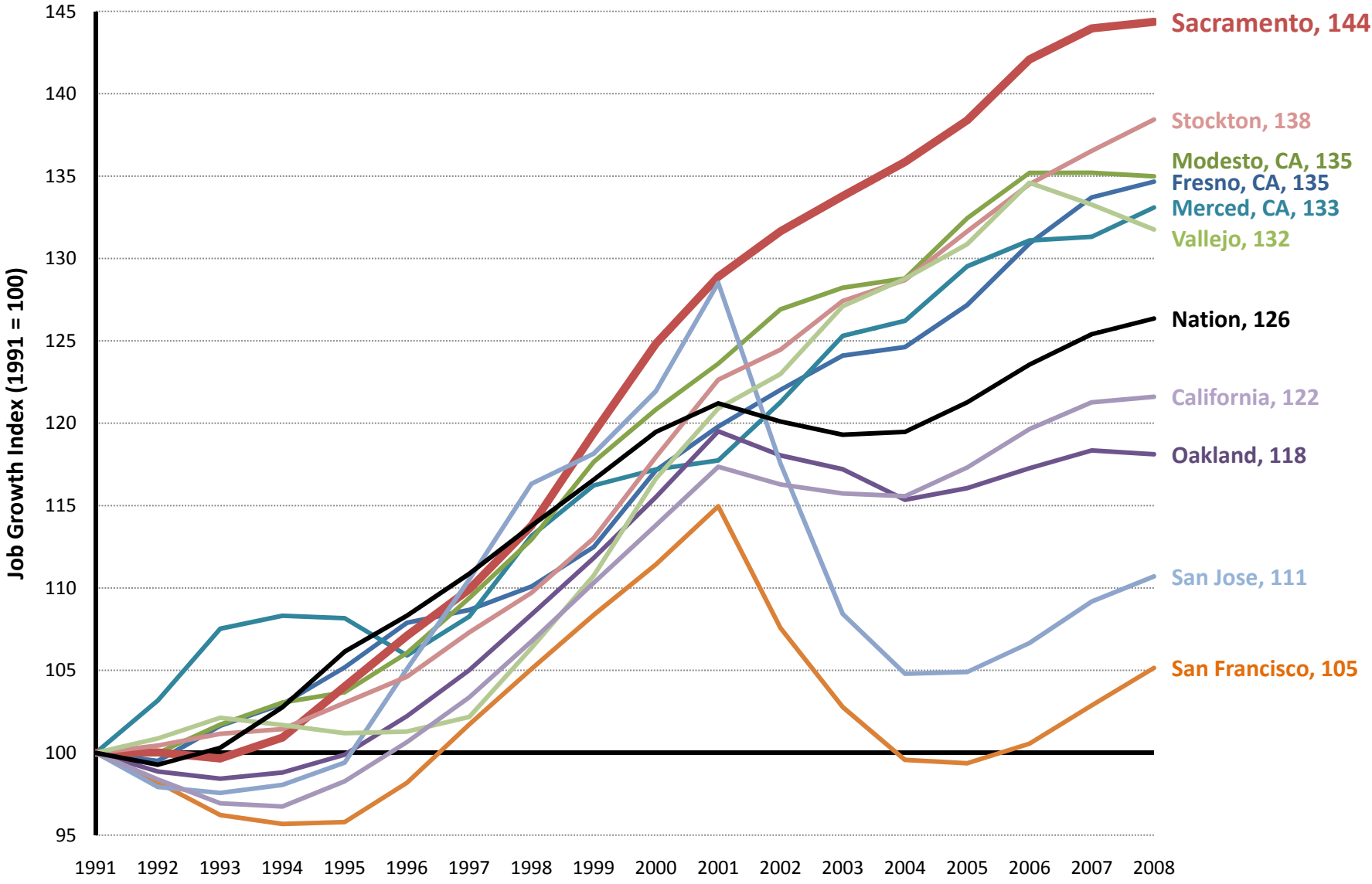
Average Annual Employment Growth, 1991 - 2008



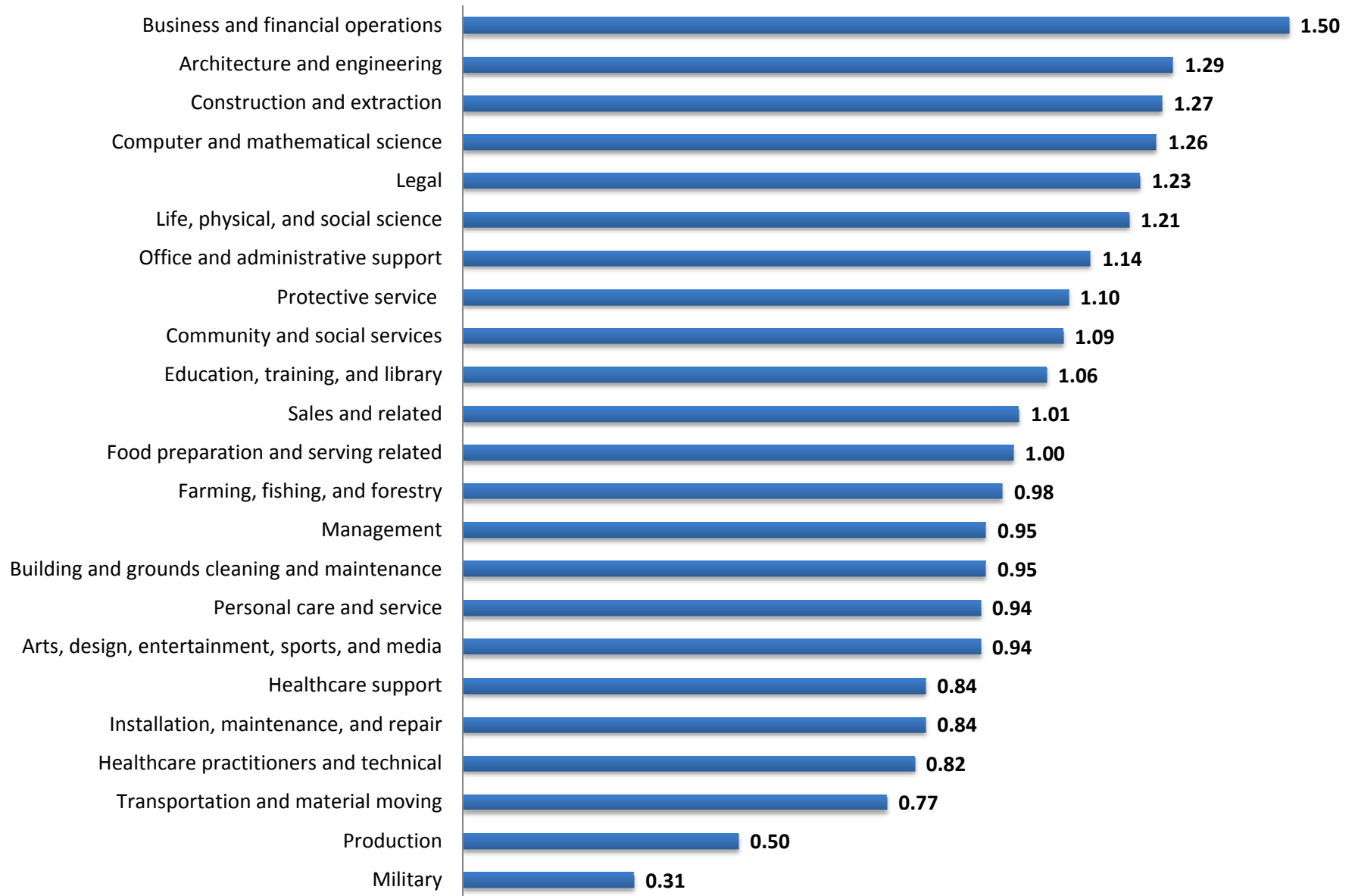
Professional & Business Services, Average Annual Employment Growth, 1991 - 2008



Sacramento Region Employment Growth Index, 1991 - 2008

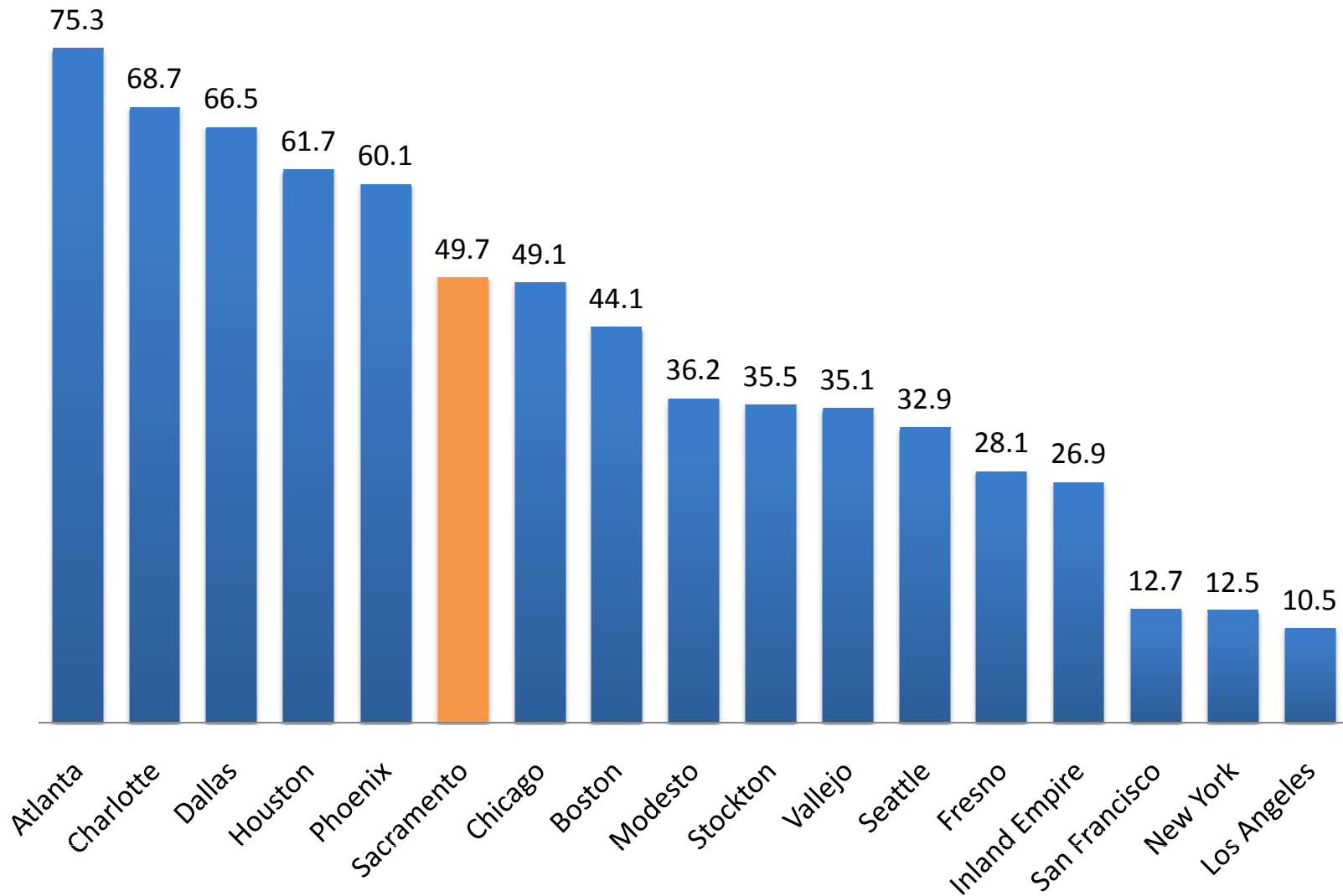


Sacramento Region Occupational Landscape



Source: EMSI Complete Employment, Spring 2008

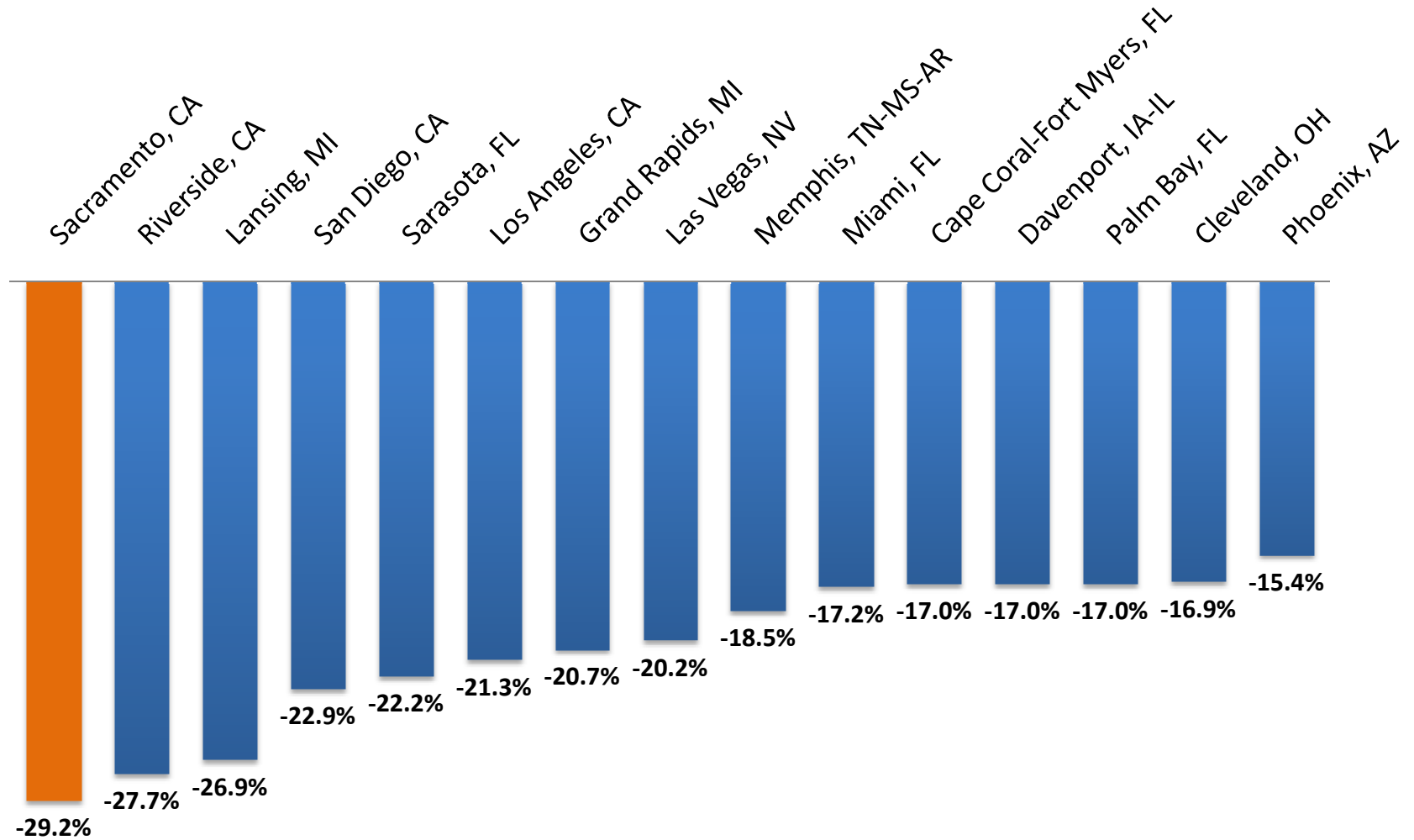
Housing Affordability Index Between Leading Regions (Share of homes affordable to median income family)



Source: National Association of Homebuilders

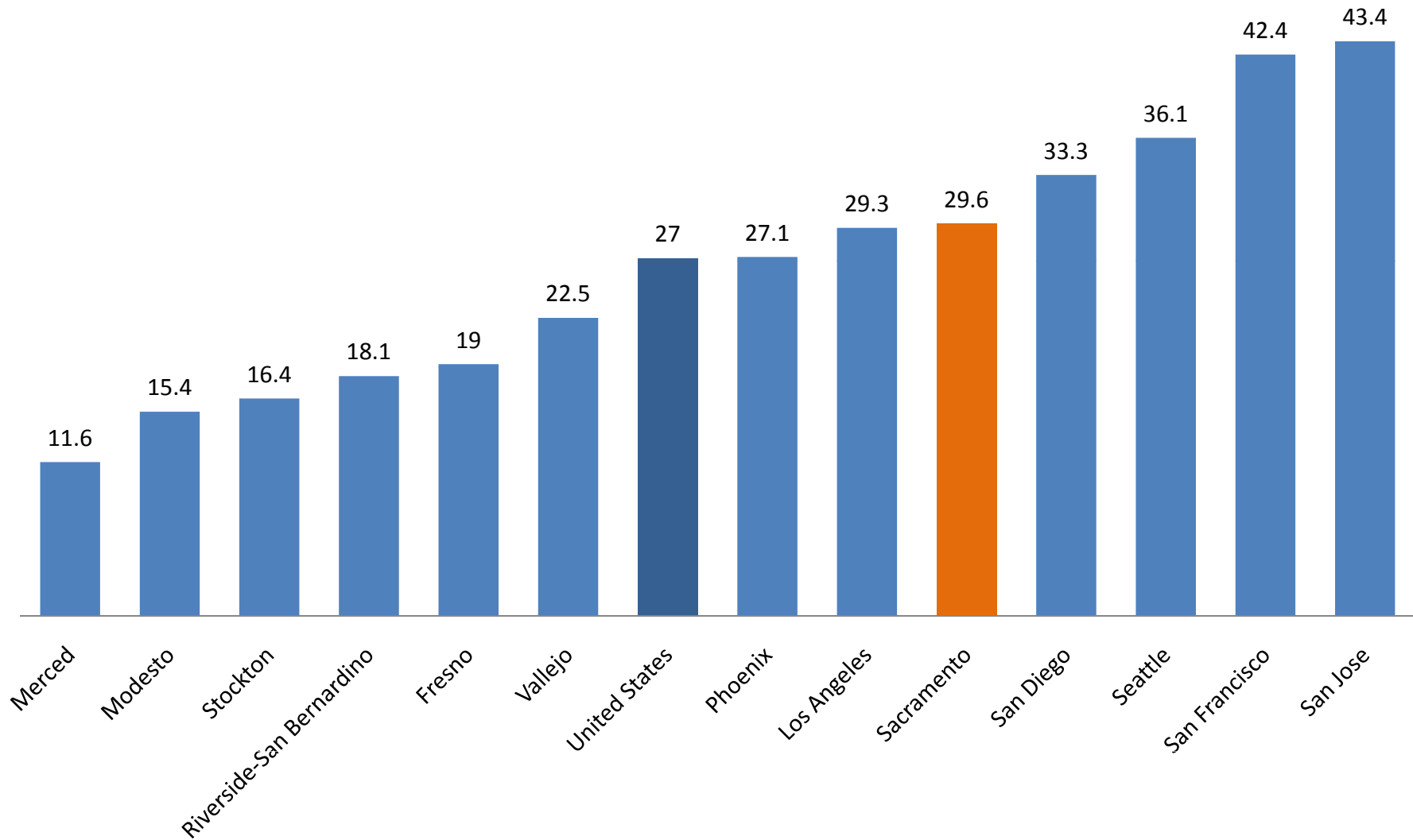
Housing Opportunity Index, Q2 2007

Fastest Single Family Home Price Decline, Q1 2007 - Q1 2008

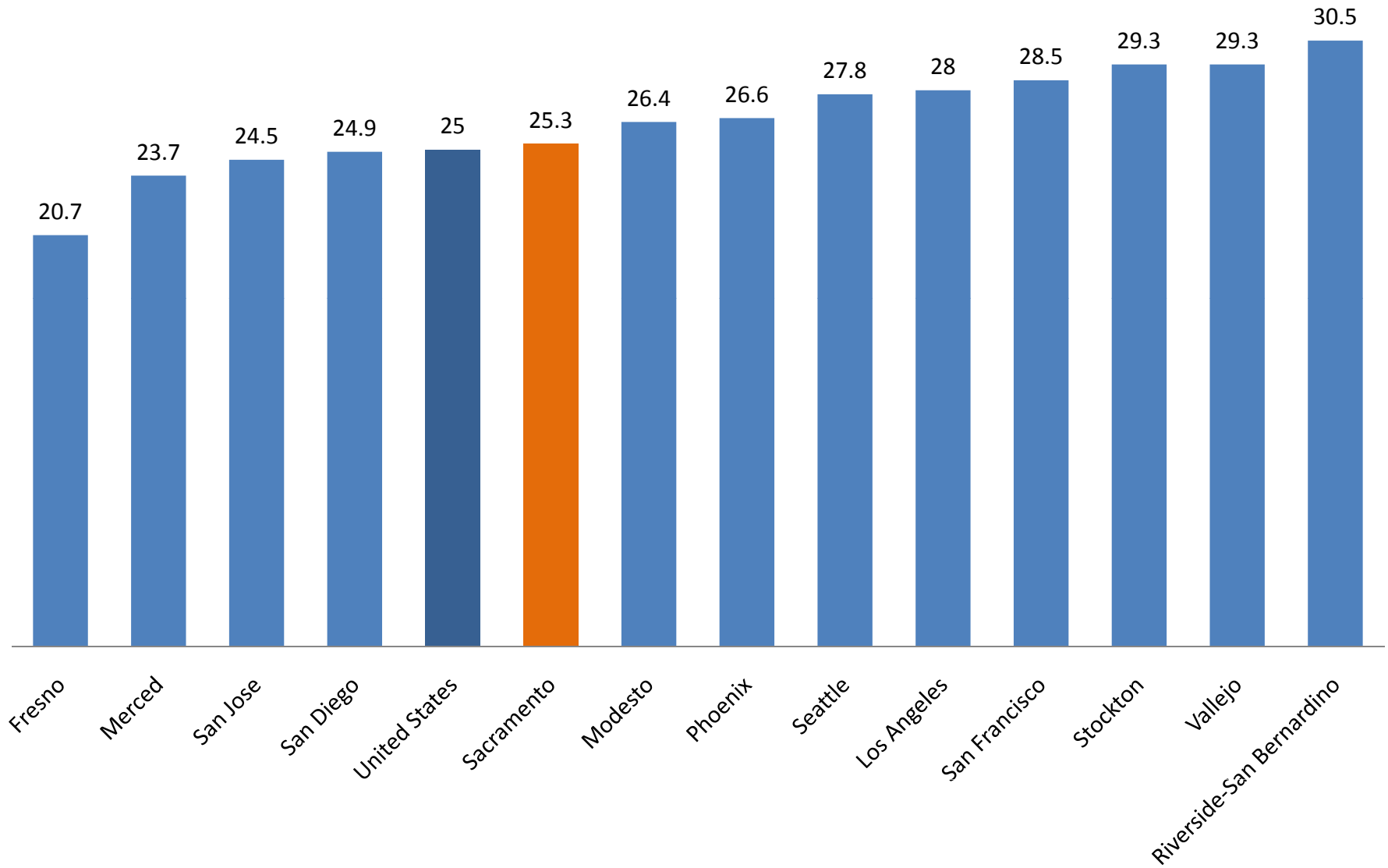


Source: National Association of Realtors

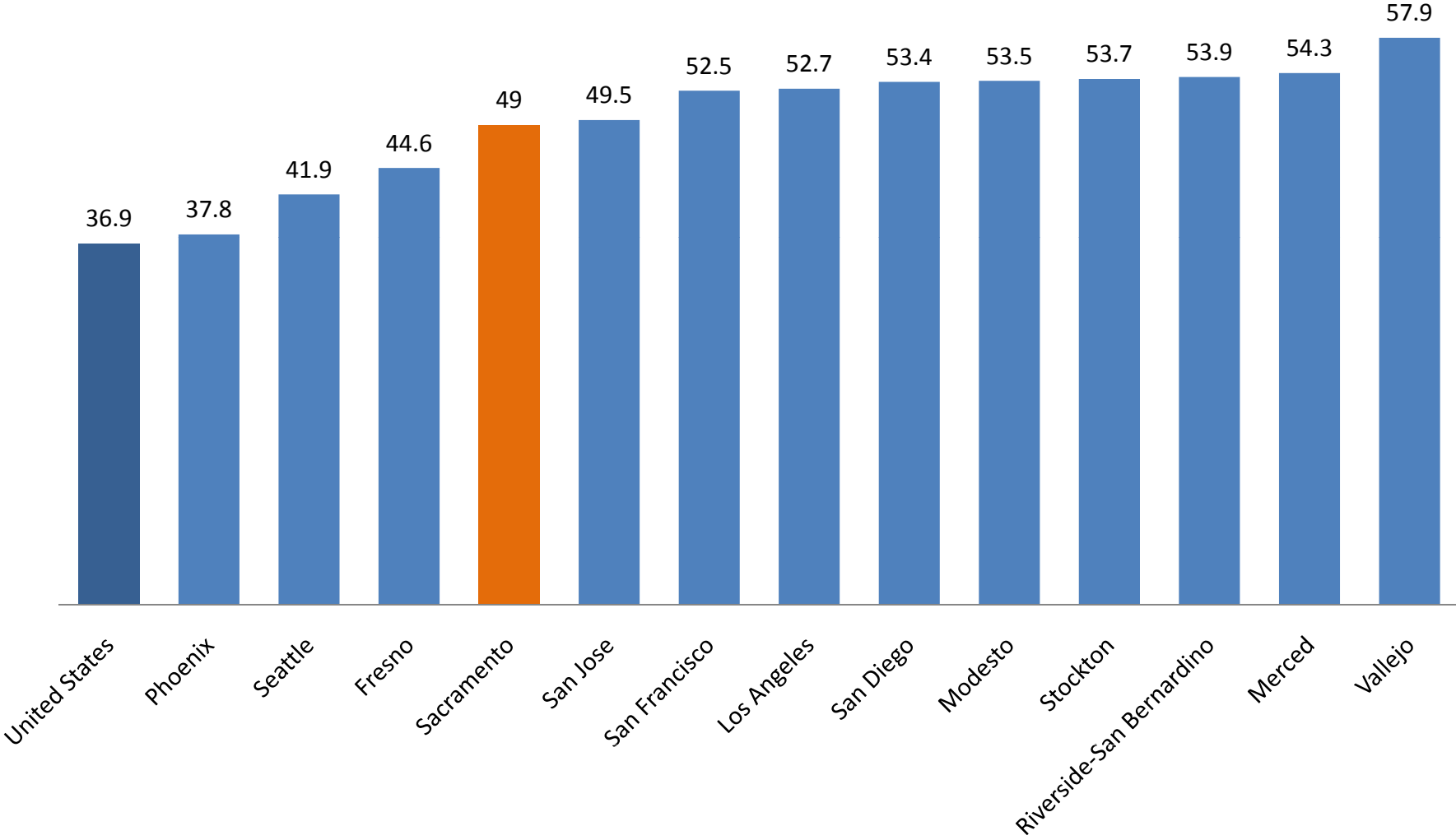
Percent of Population over age 25 with at least a Bachelor's Degree, 2006



Mean Travel to Work, in Minutes, 2006



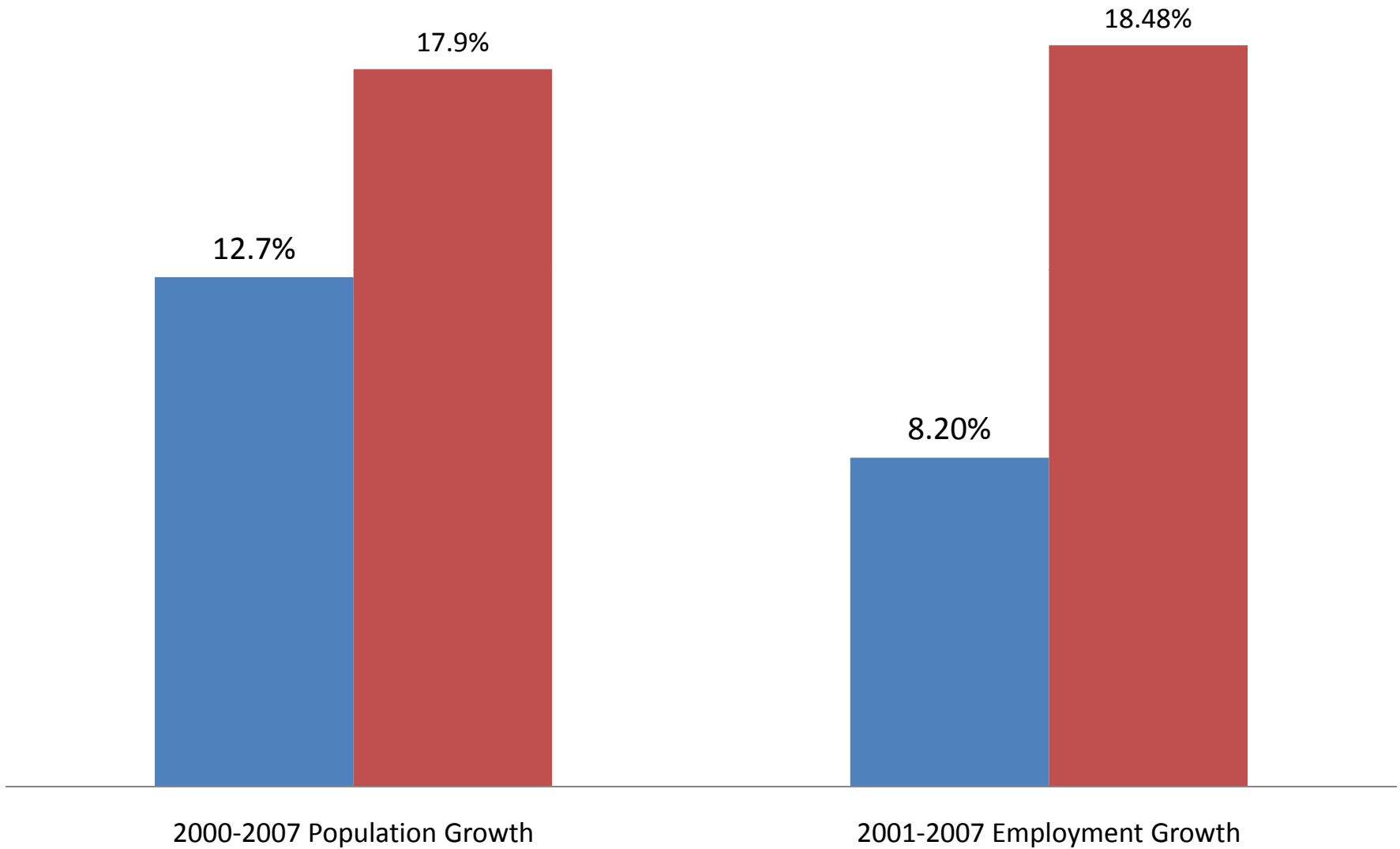
Percent of Mortgaged Owners Spending 30% or more of Household Income on Owner Costs, 2006



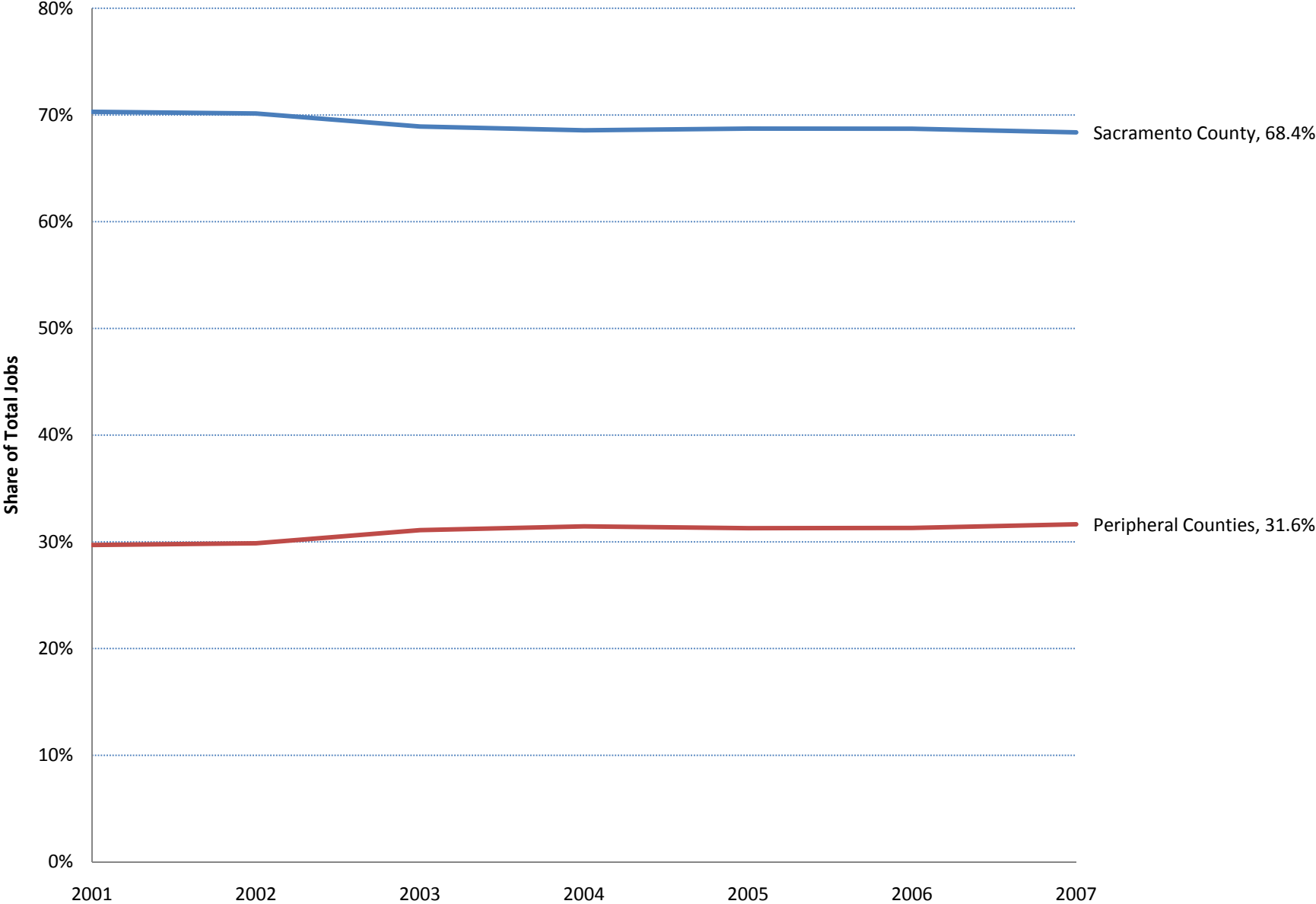
Praxis Strategy Group Analysis of U.S. Census American Community Survey, 2006

Sacramento Growth: Core vs Periphery

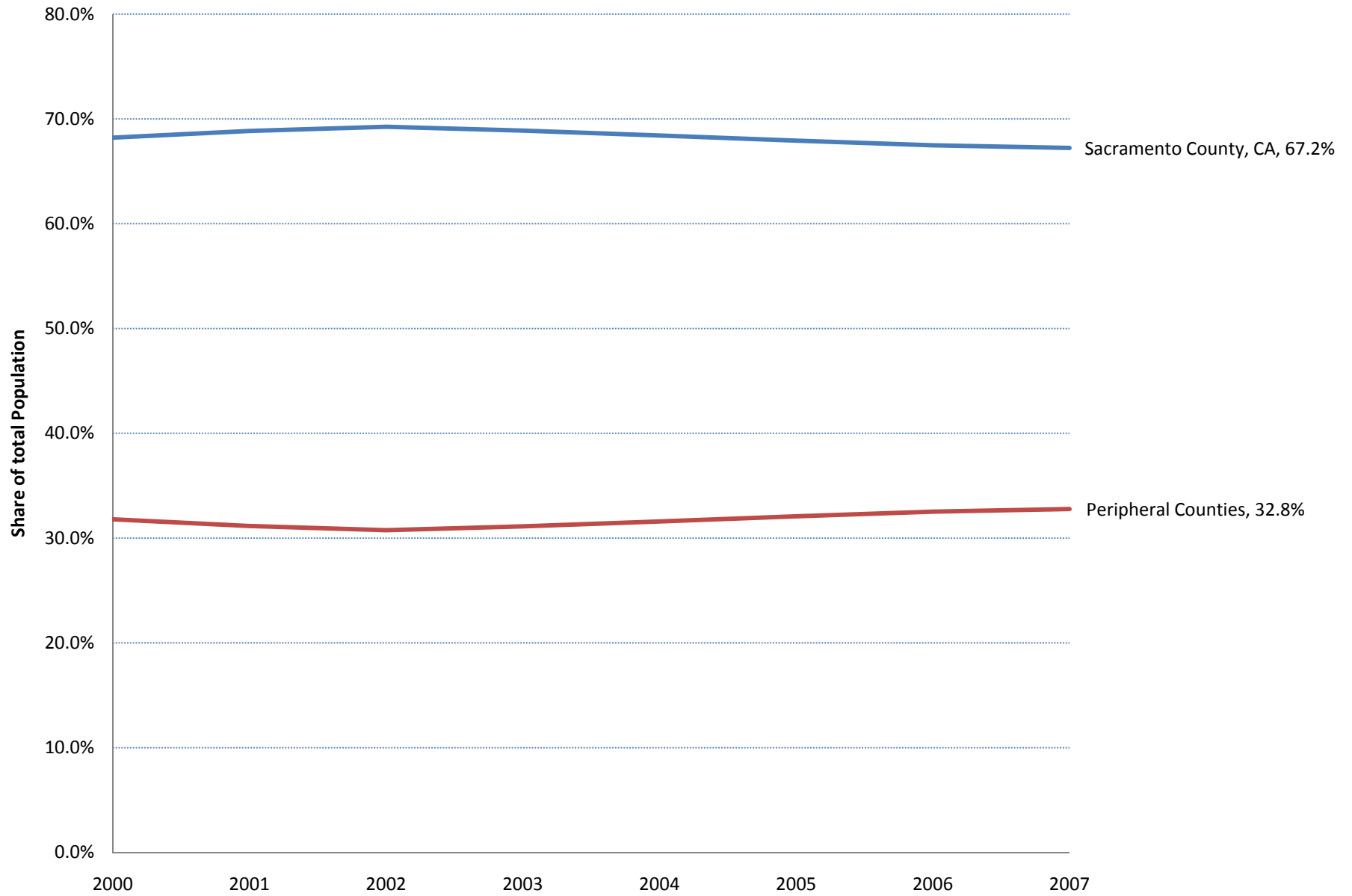
■ Sacramento County ■ Peripheral Counties



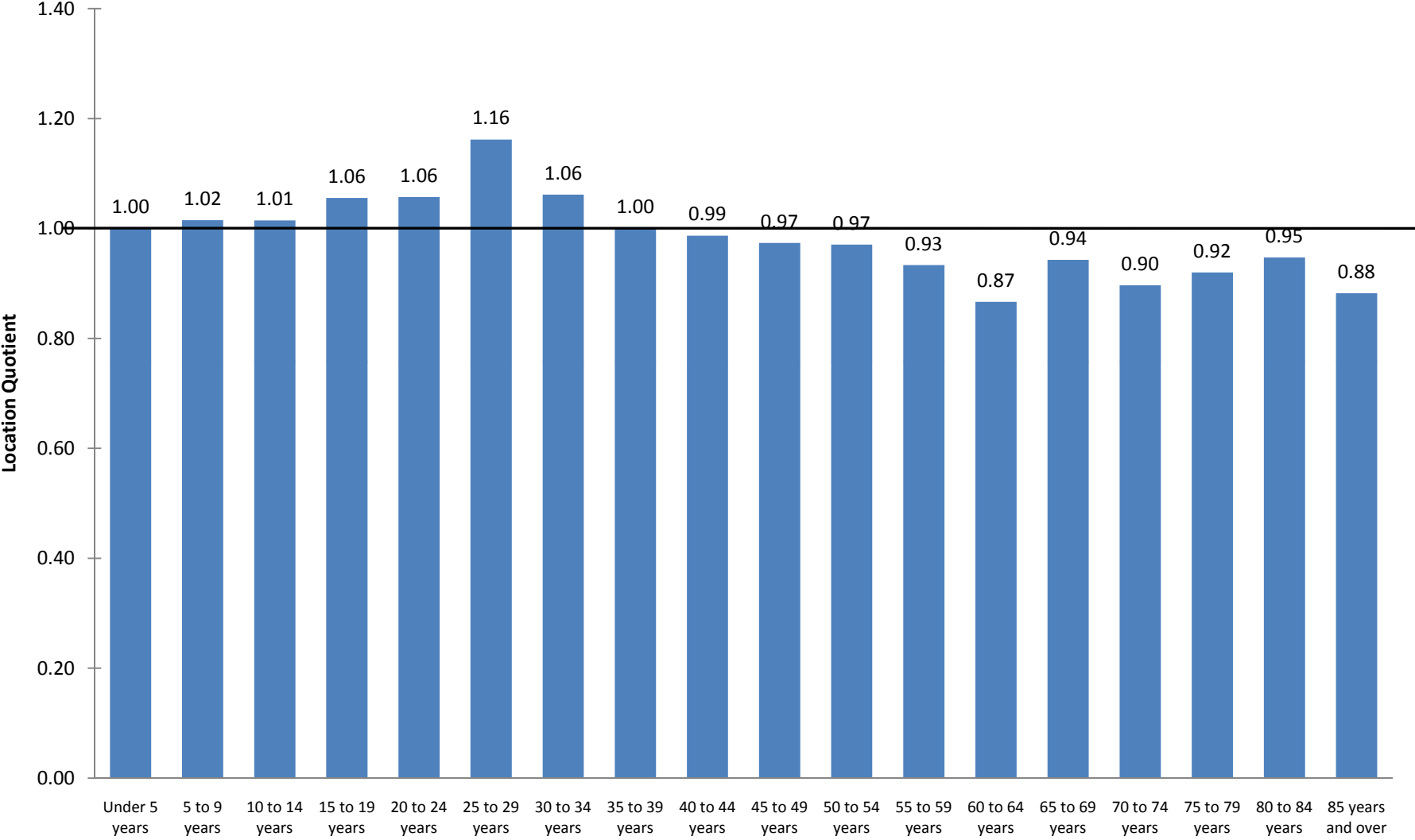
Share of total Jobs In Metro Area, 2001 - 2007



Sacramento Share of Total Population, Core vs. Periphery, 2000 - 2007



Sacramento Region Age Group Concentrations, 2006



Location Quotient is a measure of concentration relative to the Nation

Source: U.S. Census American Community Survey, 2006

Age Group Concentrations, 2006

